



## EXAM PAPERS PRACTICE

Boost your performance and confidence with these topic-based exam questions

Practice questions created by actual examiners and assessment experts

Detailed mark scheme

Suitable for all boards

Designed to test your ability and thoroughly prepare you

**Level: IGCSE Oxford AQA Biology (9201)**

**Subject: Biology**

**Topic: IGCSE AQA Biology**

**Type: Topic Question**

2002



1583

To be used by all students preparing for IGCSE Oxford AQA Biology (9201)  
Students of other Boards may also find this useful

---

**Biology**

**IGCSE AQA**

**Key skills**

---

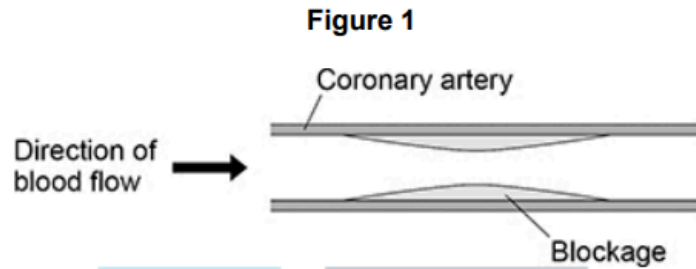


1.

A high cholesterol concentration in the blood can lead to blockages inside arteries.

The coronary arteries supply blood to the heart muscle.

Figure 1 shows a coronary artery with a blockage.



(a) Why could the blockage in Figure 1 cause cells in the heart to die?

---

---

---

---

(2)

Doctors can measure the concentration of cholesterol in the blood.

The table below shows four different blood cholesterol categories.

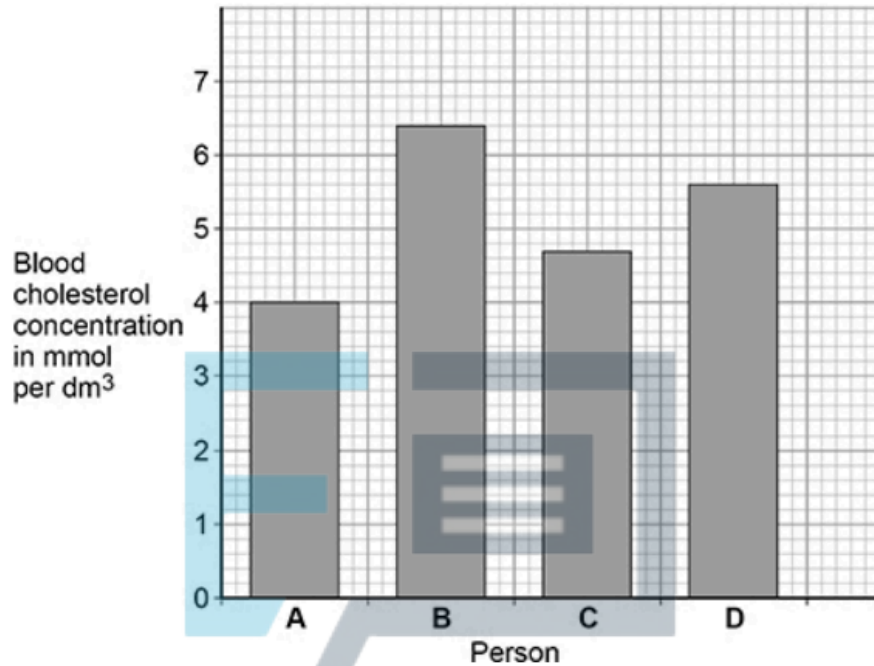
Blood cholesterol concentration in mmol per dm <sup>3</sup>	Cholesterol category
<4.6	Low
4.6–5.0	Normal
5.1–6.1	Medium
6.2 and above	High

Figure 2 shows the blood cholesterol concentration of four people.



Figure 2 shows the blood cholesterol concentration of four people.

Figure 2



(b) Which person is in the medium cholesterol category?

Tick (✓) **one** box.

EXAM PAPERS PRACTICE

Copyright © 2024 Exam Papers Practice

A

B

C

D

(1)

(c) Which person is most at risk of having a heart attack?

Tick (✓) **one** box.

A

B

C

D

(1)



(d) Give a reason for your answer to part (c).

---

---

(1)

(e) The blood cholesterol concentration of person **D** is greater than the blood cholesterol concentration of person **A**.

Calculate how many times greater.

Use **Figure 2**.

---

---

---

---

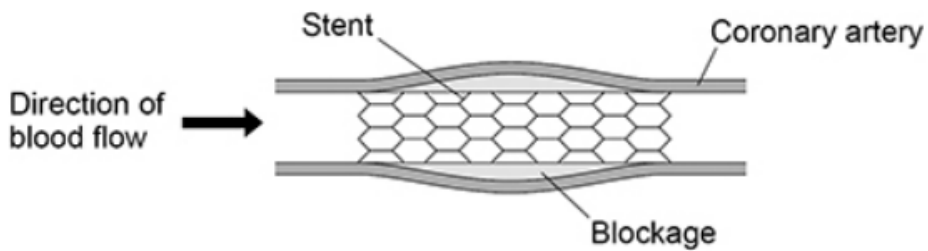
Number of times greater = \_\_\_\_\_

(2)

**Figure 3** shows how a stent can be used to treat a person with a blockage in a coronary artery.

Copyright © 2024 Exam Papers Practice

**Figure 3**





(f) Explain how a stent works as a treatment for a person with a blockage in a coronary artery.

---

---

---

---

(2)

Patients are given anti-clotting drugs after they have a stent fitted.

The drugs help to prevent clots forming in the blood.

(g) Which part of the blood starts the blood clotting process?

Tick (✓) **one** box.

Antibodies

Plasma

Platelets

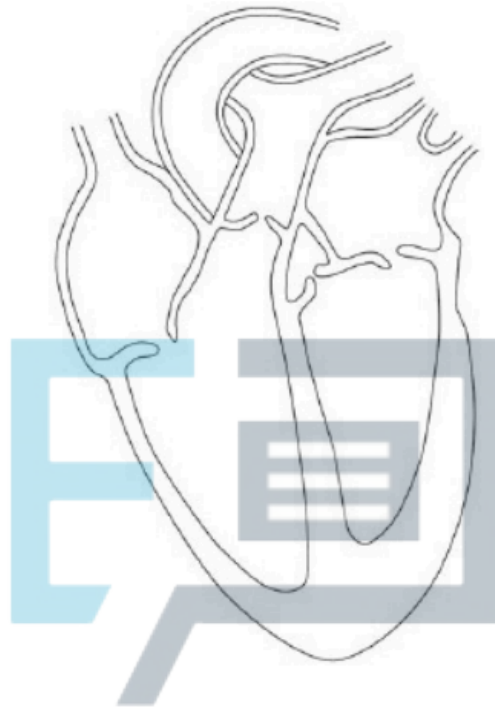
Red blood cells

(1)



2. **Figure 1** shows the internal structure of the human heart.

**Figure 1**



(a) Which organ system is the heart a part of?

EXAM PAPERS PRACTICE

Copyright  
© 2024 Exam Papers Practice

(1)

(b) Draw a ring around **one** valve on **Figure 1**.

(1)

(c) What is the function of the valves in the heart?

---

---

(1)

(d) Valves are also found inside some blood vessels.

Which type of blood vessel contains valves?

---

(1)



Sometimes a valve in the heart can begin to leak.

A leaking heart valve may be replaced with either:

- a mechanical valve
- a biological valve from a pig.

**Table 1** shows information about the replacement valves.

**Table 1**

Mechanical valve	Biological valve from a pig
Made of plastic or metal	Made from living tissue
Can cause the blood to clot around the valve	No risk of blood clotting around the valve
No need for another replacement valve after 5 years	Sometimes another replacement valve is needed after 5 years

(e) Suggest **two** reasons why a patient may choose a mechanical valve and **not** a biological valve from a pig.

1 EXAM PAPERS PRACTICE

\_\_\_\_\_

2 \_\_\_\_\_

\_\_\_\_\_

(2)

(f) Suggest **one** reason why a patient may choose a biological valve from a pig and not a mechanical valve.

\_\_\_\_\_

\_\_\_\_\_

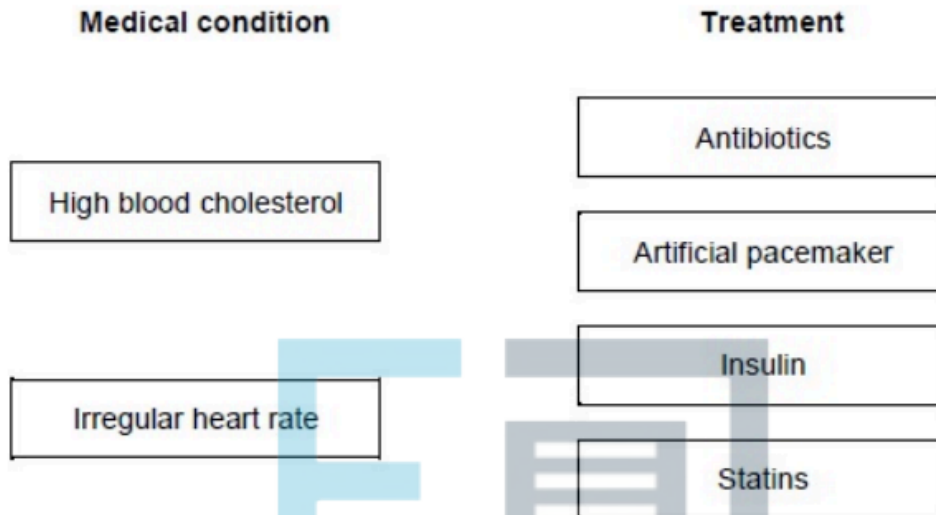
(1)





(g) A person may develop other medical conditions.

Draw **one** line from each medical condition to the correct treatment.

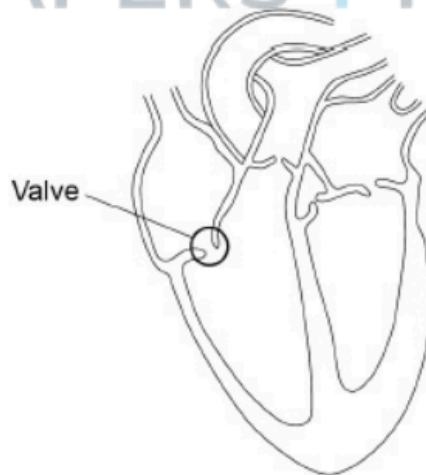


(2)  
(Total 9 marks)

3. The figure below shows the internal structure of the human heart.

One of the heart valves is labelled.

Copyright  
© 2024 Exam Papers Practice







The following table shows the data.

	Type of replacement heart valve	
	Mechanical	Biological
Number of patients given the valve	2852	1754
Number of patients who died from heart-related problems after valve replacement	180	178
Percentage of patients alive after 5 years	91	89
Percentage of patients needing a second valve replacement within 6 years	2.2	5.2
Percentage of patients who had a blood clot on the brain after surgery	5.8	0.1



- (b) Give **one** conclusion about the death of patients from heart-related problems after a valve replacement.

Include calculations to support your answer.

---

---

---

---

---

---

---

---

---

---

(3)

- (c) One risk of mechanical valves is that blood clots can form on the surface of the valve.

Name the component of the blood that starts the process of blood clotting.

---

(1)



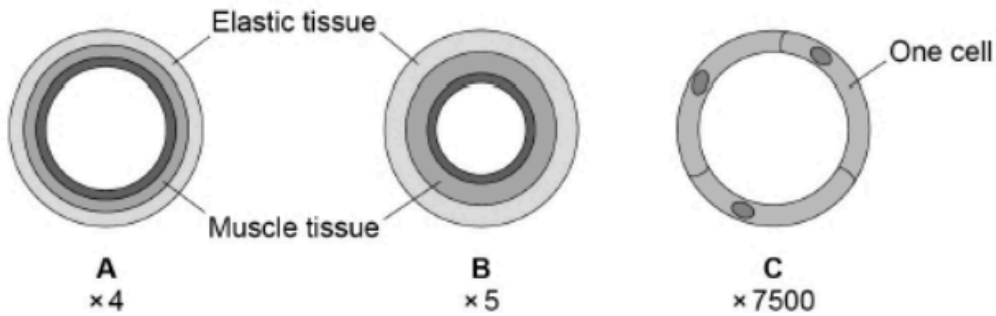


Blood Component	Function
	Destroys microorganisms
Platelet	Helps the blood to clot
Red blood cell	Transports glucose around the body
White blood cell	Transports oxygen around the body
	Transports urea

Copyright © 2024 Exam Papers Practice



(b) The diagram below shows cross sections of the three main types of blood vessel found in the human body. Each blood vessel is drawn to the scale shown.



Which blood vessel has the smallest diameter?

Tick **one** box.

A	<input type="checkbox"/>	B	<input type="checkbox"/>	C	<input type="checkbox"/>
---	--------------------------	---	--------------------------	---	--------------------------

(1)



(c) Which blood vessel in the figure above is an artery?

Give **one** reason for your answer.

Blood vessel: \_\_\_\_\_

Reason: \_\_\_\_\_

\_\_\_\_\_

(2)

**Table 1** gives information about the blood flow in two people.

**Table 1**

Person	Blood flow through the coronary arteries in $\text{cm}^3 / \text{minute}$
<b>A</b> – does <b>not</b> have coronary heart disease	250
<b>B</b> – has coronary heart disease	155

(d) Calculate the difference in blood flow between person **A** and person **B**.

Copyright © 2024 Exam Papers Practice

Difference = \_\_\_\_\_  $\text{cm}^3 / \text{minute}$

(1)





(e) Suggest why blood flow through the coronary arteries is lower in people with coronary heart disease.

---

---

(1)

(f) Calculate the volume of blood flowing through the coronary arteries of person **A** in 1 hour.  
Give your answer in  $\text{dm}^3$ .

---

---

---

---

---

Volume of blood in 1 hour = \_\_\_\_\_  $\text{dm}^3$

(2)

Coronary heart disease can be treated by:

- inserting a stent
- using a Coronary Artery Bypass Graft (CABG).

**Table 2** gives information about each method.



Table 2

	Stent	CABG
<b>Procedure</b>	The patient is awake during the procedure. A small cut is made in the skin. A wire mesh is inserted into the coronary artery via a blood vessel in the arm or leg.	The patient is not awake during the procedure. The chest is cut open. A section of blood vessel from the arm or leg is removed. It is used to create a new channel for blood to bypass the blockage in the coronary artery.
<b>When procedure is recommended</b>	When only one blockage is present	When multiple blockages are present
<b>Time spent in hospital after procedure</b>	2-3 hours	at least 7 days
<b>Recovery time after procedure</b>	7 days	12 weeks
<b>Risk of heart attack during procedure</b>	1%	2%
<b>Chance of failure within one year</b>	40%	5%



(g) Give **two** advantages of using a stent instead of CABG.

1. \_\_\_\_\_  
\_\_\_\_\_
2. \_\_\_\_\_  
\_\_\_\_\_

(2)

(h) Give **two** advantages of using CABG instead of a stent.

1. \_\_\_\_\_  
\_\_\_\_\_
2. \_\_\_\_\_  
\_\_\_\_\_

(2)

(Total 14 marks)

5.

The circulatory system is composed of the blood, blood vessels and the heart.

(a) Urea is transported in the blood plasma.

Copyright © 2024

Name **two** other substances transported in the blood plasma.

1. \_\_\_\_\_
2. \_\_\_\_\_

(2)



(b) Some athletes train at high altitude.

Training at high altitude increases the number of red blood cells per  $\text{cm}^3$  of blood.

Explain why having more red blood cells per  $\text{cm}^3$  of blood is an advantage to an athlete.

---

---

---

---

---

---

---

---

(3)

(c) Which **two** blood vessels carry deoxygenated blood?

Tick **two** boxes.

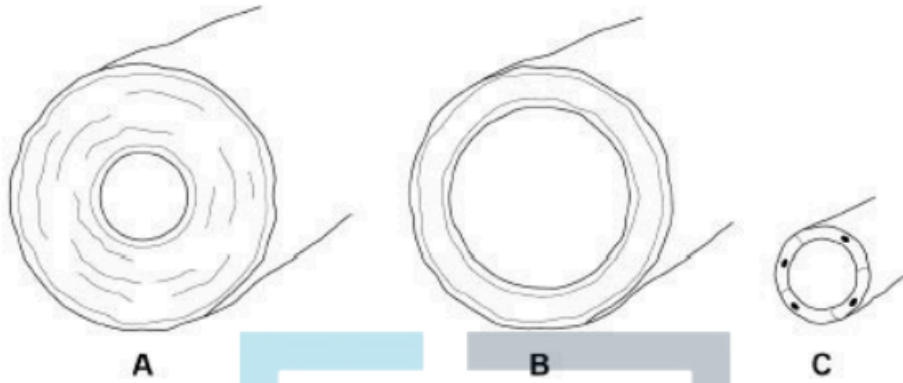
EXAM PAPERS PRACTICE  
Copyright © 2024 Exam Papers Practice

Aorta	<input checked="" type="checkbox"/>
Coronary artery	<input type="checkbox"/>
Pulmonary artery	<input type="checkbox"/>
Pulmonary vein	<input type="checkbox"/>
Vena cava	<input type="checkbox"/>

(2)

Figure 1 shows the three types of blood vessel.

**Figure 1**



(d) Which type of blood vessel carries blood into the right atrium?

Tick **one** box.

A		B		C	
---	--	---	--	---	--

(1)

(e) Compare the structure of an artery with the structure of a vein.

Copyright © 2014

---

---

---

---

---

---

---

---

---

(3)



- (f) Heart rate is controlled by a group of cells. This group of cells act as a pacemaker.

**Figure 2** shows a section through the heart.

Draw an **X** on **Figure 2** to show the position of the pacemaker.

**Figure 2**



EXAM PAPERS PRACTICE

Copyright © 2024 Exam Papers Practice

(1)

- (g) A patient may be fitted with an artificial pacemaker.

What condition may be treated using an artificial pacemaker?

---

---

(1)

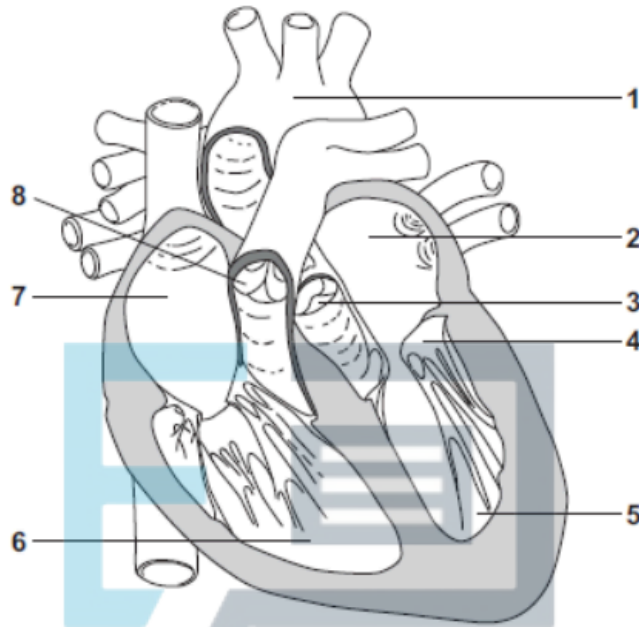
(Total 13 marks)



6.

The diagram in **Figure 1** shows a section through the human heart, seen from the front.

**Figure 1**



(a) Draw a ring around the correct answer to complete each sentence.

(i) The wall of the heart is made mostly of

- epithelial
- glandular
- muscular

tissue.

(1)



(ii) The resting heart rate is controlled by the pacemaker.

The pacemaker is located at position

- 1.
- 6.
- 7.

(1)

(iii) If a person's heart rate is irregular, the person may be fitted with an artificial pacemaker.

The artificial pacemaker is

- an electrical device.
- a pump.
- a valve.

(1)

(b) (i) Write a number, **2**, **5**, **6** or **7**, in **each** of the three boxes to answer this question.

EXAM PAPERS PRACTICE  
Which chamber of the heart:

- Copyright © 2022 pumps oxygenated blood to the head and body
- receives deoxygenated blood from the head and body
- receives oxygenated blood from the lungs?

(3)

(ii) Give the number, **3**, **4** or **8**, of the valve that closes when the blood pressure in the aorta is greater than the blood pressure in the left ventricle.

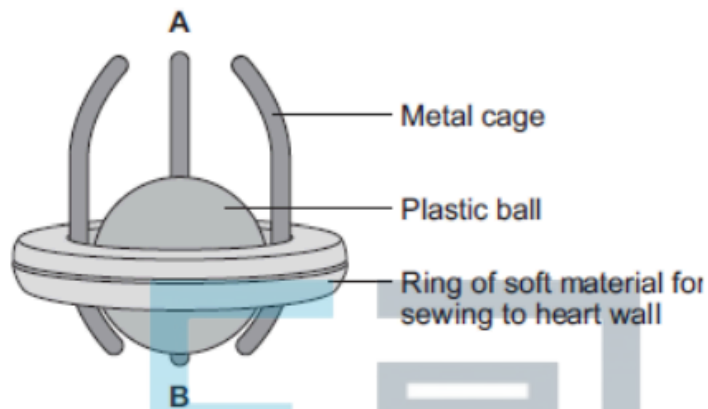
Write the correct answer in the box.

(1)



- (c) The diagram in **Figure 2** shows one type of artificial heart valve. The plastic ball is in the closed position.

**Figure 2**



This type of artificial valve could be used to replace a faulty valve in the heart.

- (i) What is the function of valves in the heart?

---

EXAM PAPERS PRACTICE

(1)



(ii) The artificial valve could be used to replace valve **4** shown in **Figure 1**.

The artificial valve opens to let blood through when the ball is moved towards **A**.

Which end of the valve, **A** or **B**, should point towards chamber **5**?

Explain your answer.

---

---

---

---

---

---

---

---

---

---

(3)

(d) (i) The artificial heart valve may cause blood clots to form on its surface.

Describe what happens during blood clotting.

Copyright  
© 2024 Exam Papers Practice

---

---

---

---

---

(2)



(ii) Read the information in the passage.

Replacing a damaged heart valve can dramatically improve the blood circulation and the supply of oxygen to the body's tissues. The operation to replace a heart valve is a long one during which the patient's blood goes through a bypass machine. Sometimes the artificial valve can fail to work. If the surface of the valve becomes rough, small blood clots can form on its surface then break away and be carried around the body by the blood.

Evaluate the advantages and disadvantages of artificial heart valves.

---

---

---

---

---

---

EXAM PAPERS PRACTICE

Copyright © 2024 Exam Papers Practice

---

---

---

(4)  
(Total 17 marks)